

DIY2400 Bow blouse #lisebowblouse

You need the following fabric and accessories

UK Size 6-18
EU Size 34-46

Fabric: w/135 cm 130

All rights reserved
Selfmade®



Seam allowance is included on all patterns:

Center front 2x1 cm

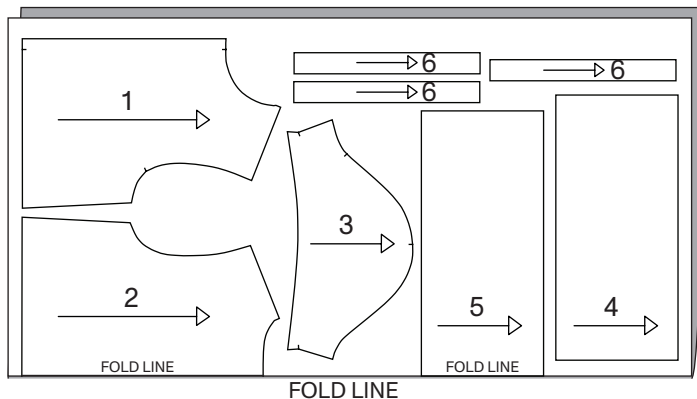
Hem line 1.5 cm

Sleeve hem 2 cm

All other seams 1 cm

You need to cut the following parts

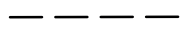
Part 1	Front	x 2	
Part 2	Back	x 1	
Part 3	Sleeve	x 2	
Part 4	Ruffle front	x 2	50 cm x 25 cm
Part 5	Ruffle back	x 1	100 cm x 25 cm
Part 6	Tie string	x 6	35 cm x 4 cm



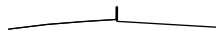
Symbols you may find on your patterns



Grain line



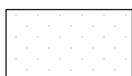
Fold line



Notch



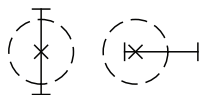
Gathering



Interlining



Cut line



Placement of button and buttonhole

10 CM

Self
made®



▲
Unsure how to print?
See this guide

CONTROL SQUARE:

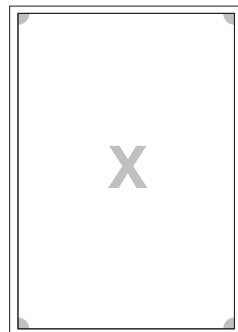
Print this page, to check the square measurements:

If the measurements do not match, please adjust your printer settings.

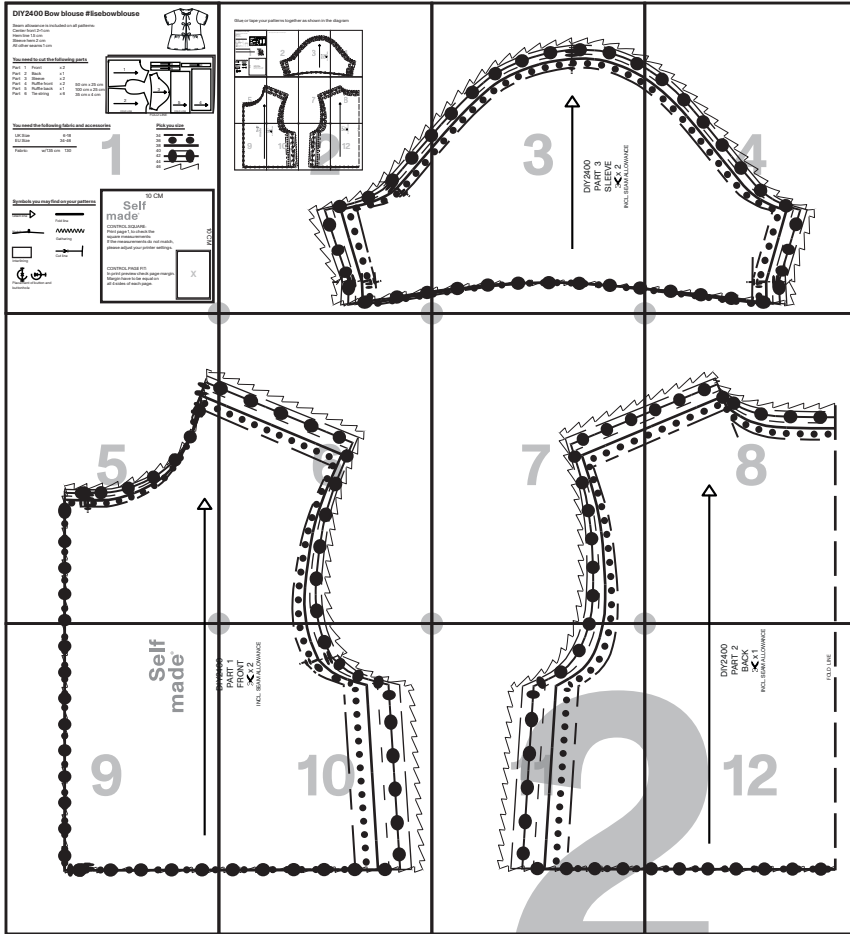
10 CM

CONTROL PAGE FIT:

In print preview check page margin.
Margin have to be equal on all 4 sides of each page.

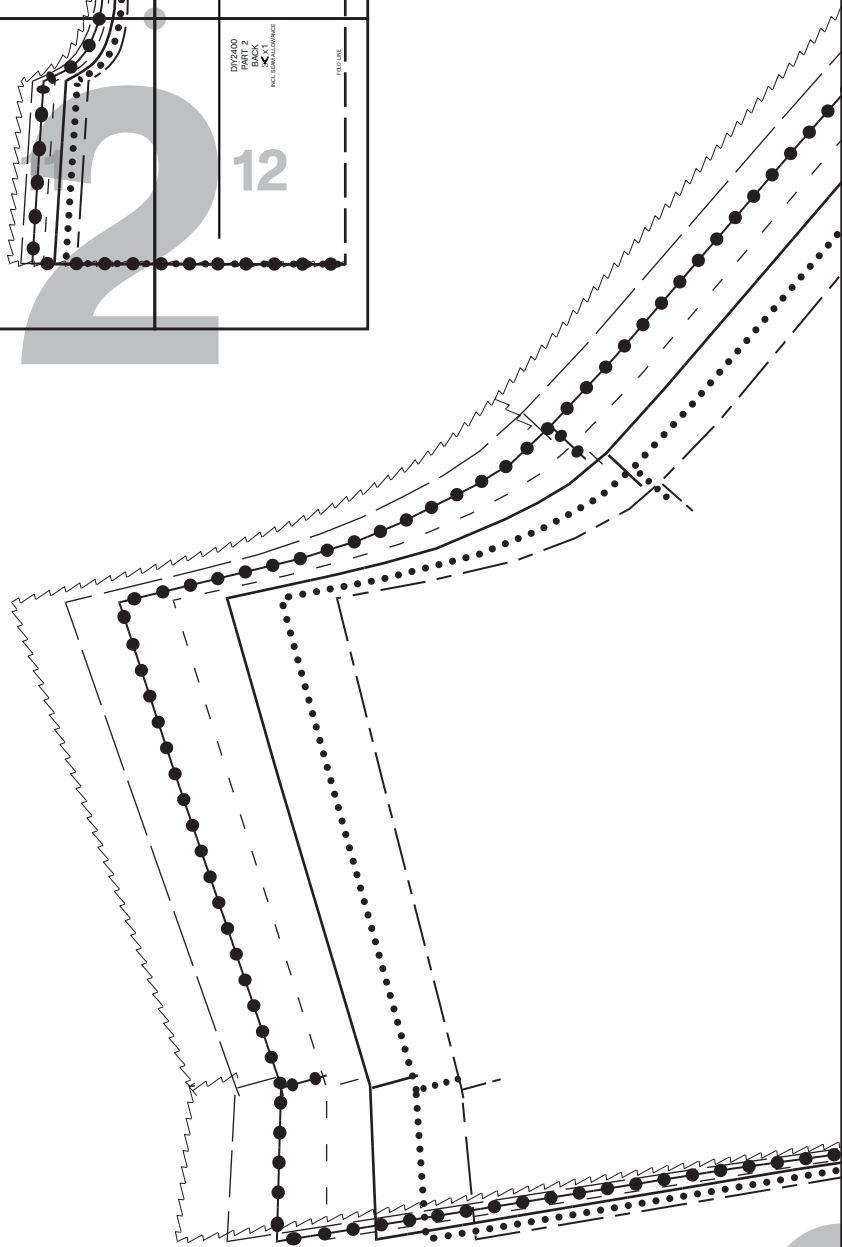


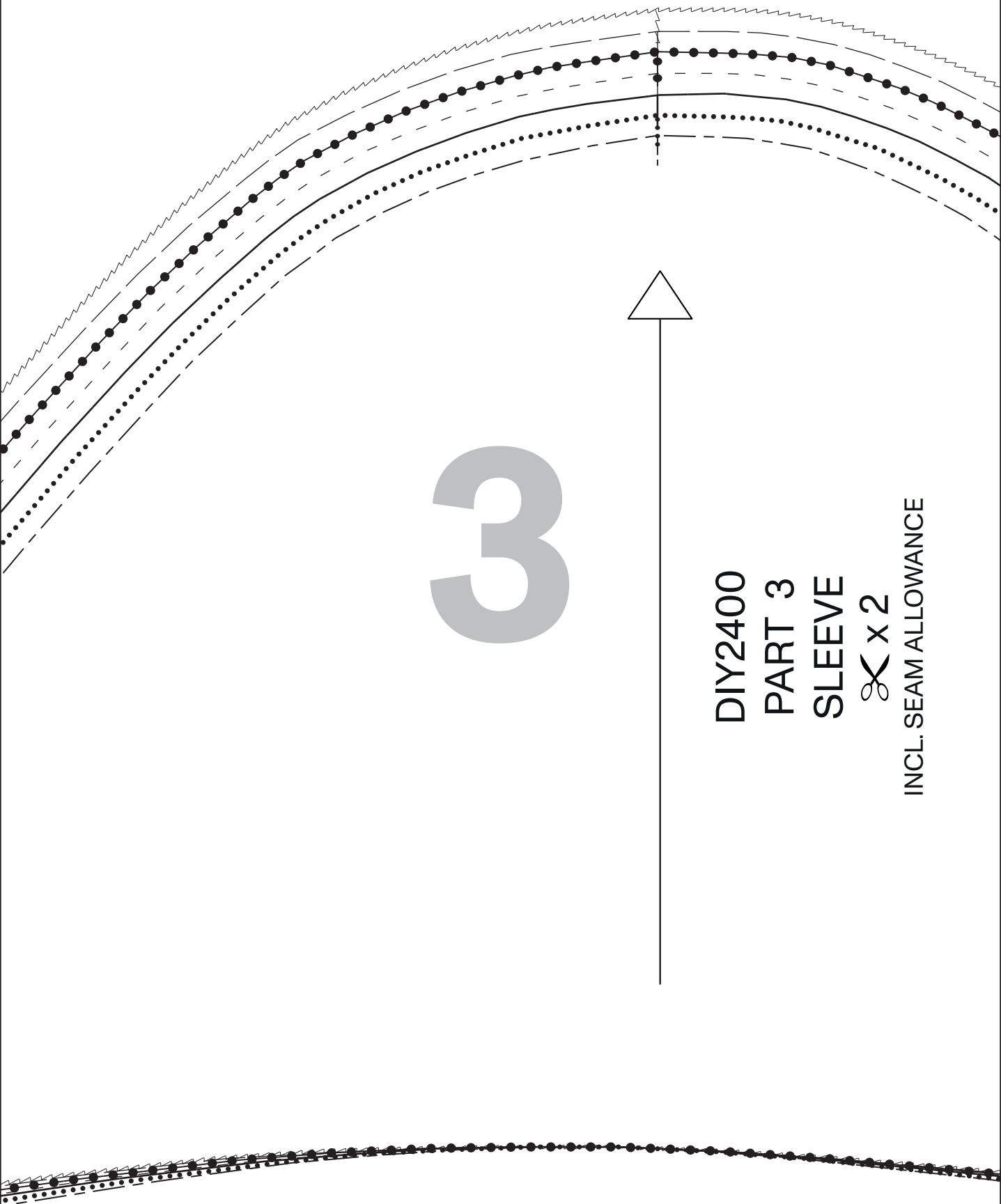
Glue or tape your patterns together as shown in the diagram



Pick you size

- 34 ————
- 36 ●●●●●●●●●●
- 38 ————
- 40 ————
- 42 ●●●●●●●●●●
- 44 ————
- 46 ~~~~~~





3

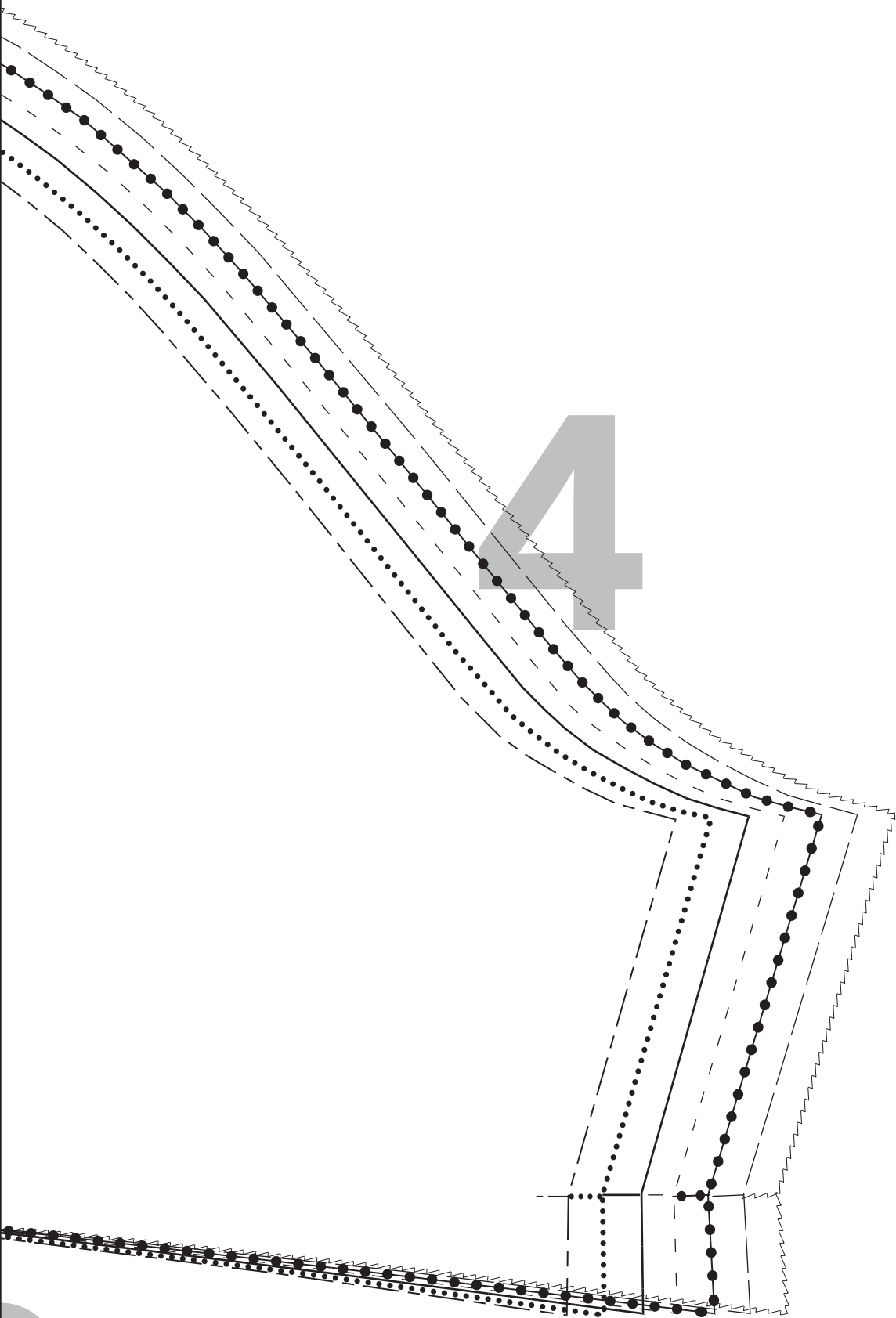
DIY2400
PART 3
SLEEVE

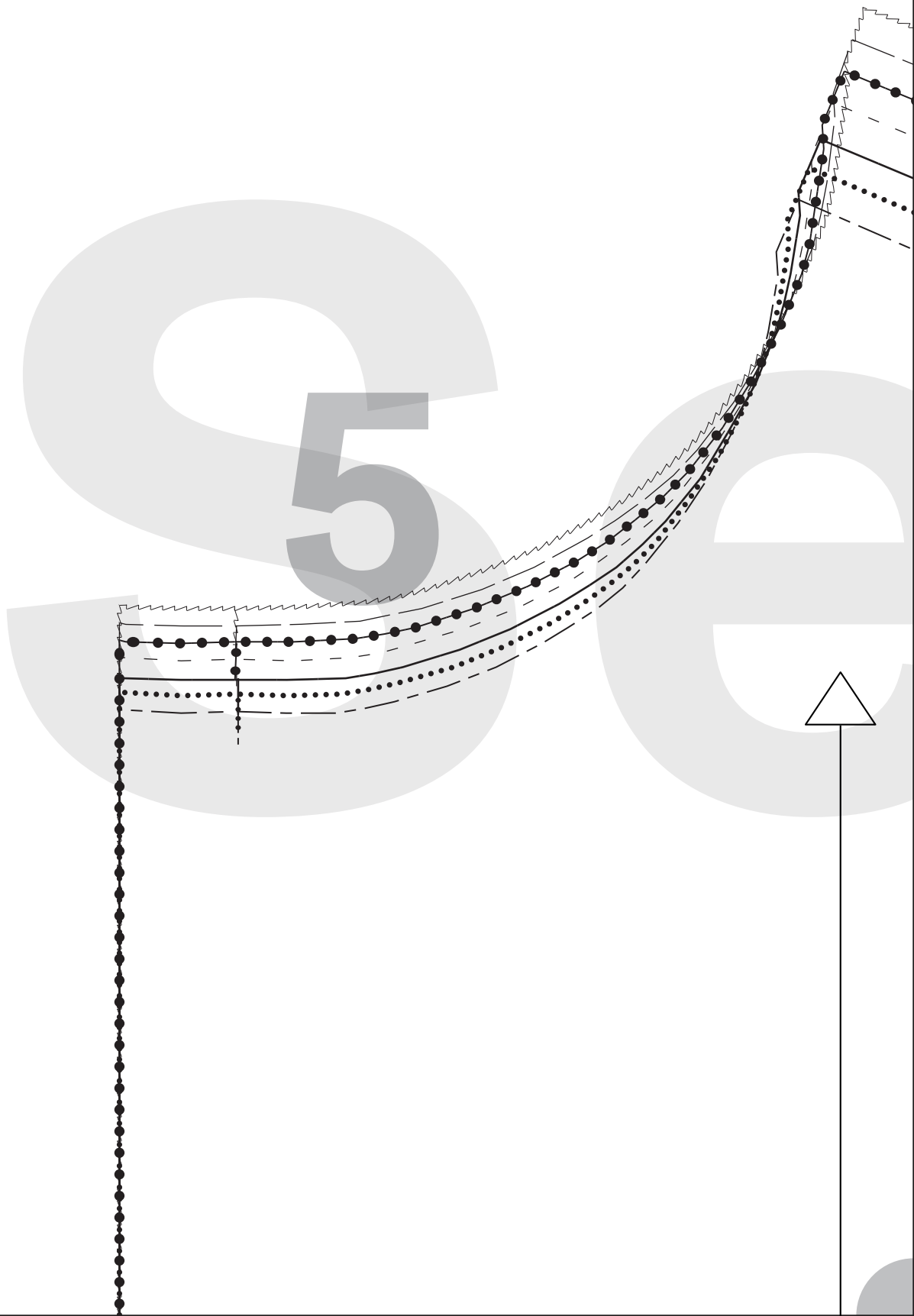


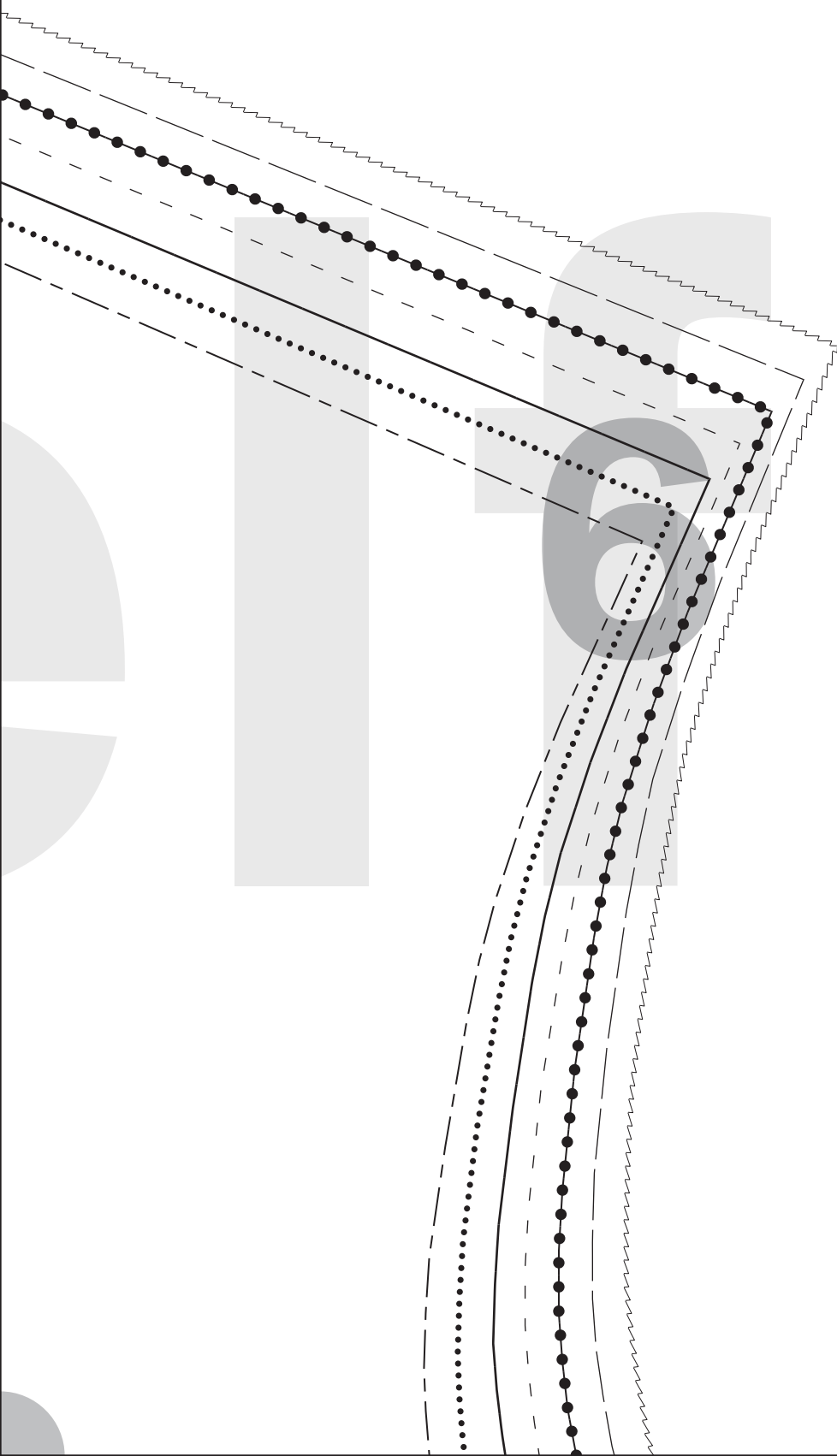
INCL. SEAM ALLOWANCE

x 2

4





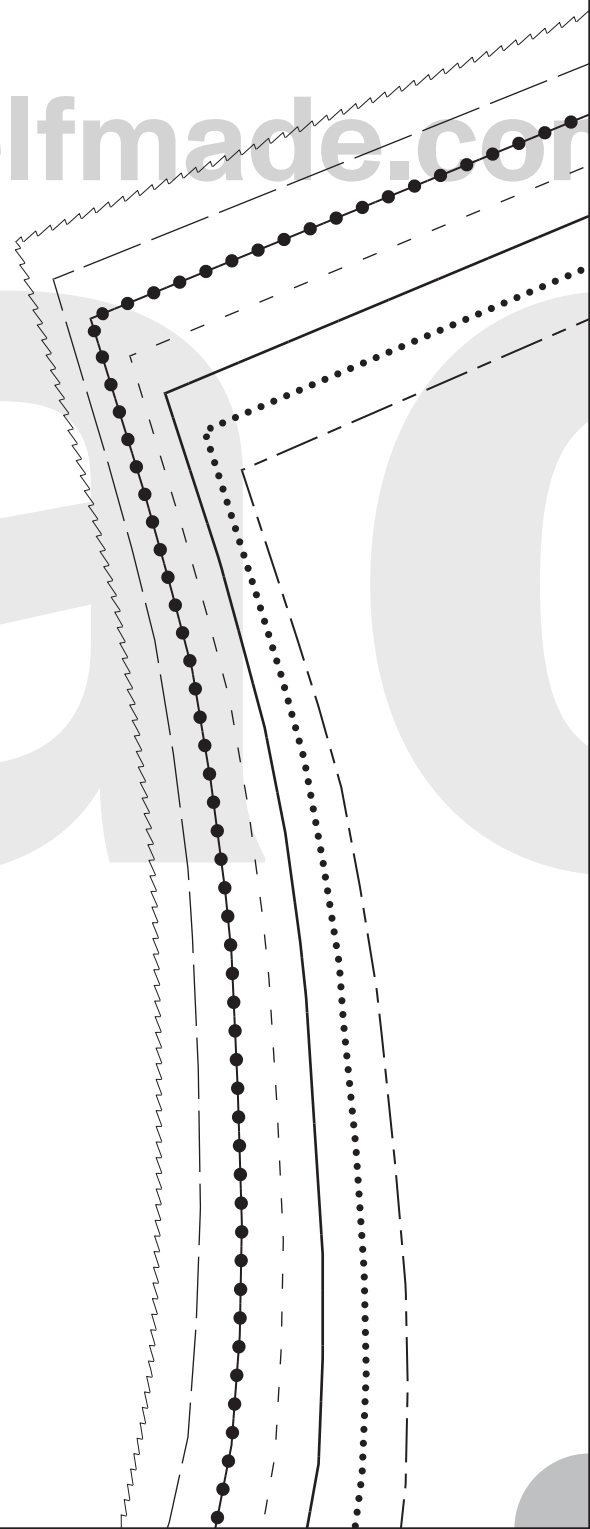


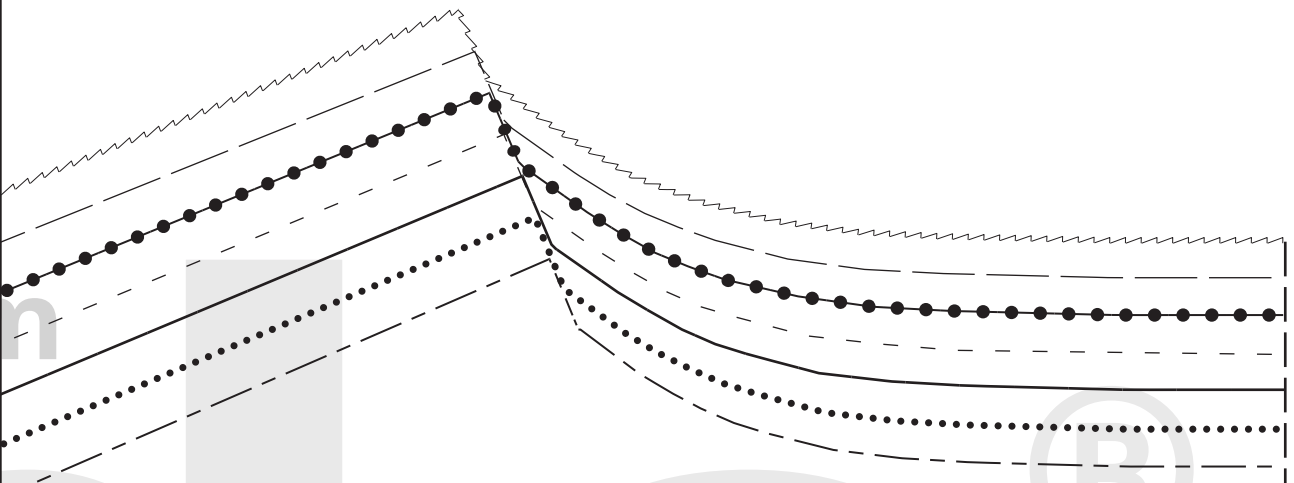
Free do

n

Download from Selfmade.com

man 720





n



de 8 e



Self
made

Self
made

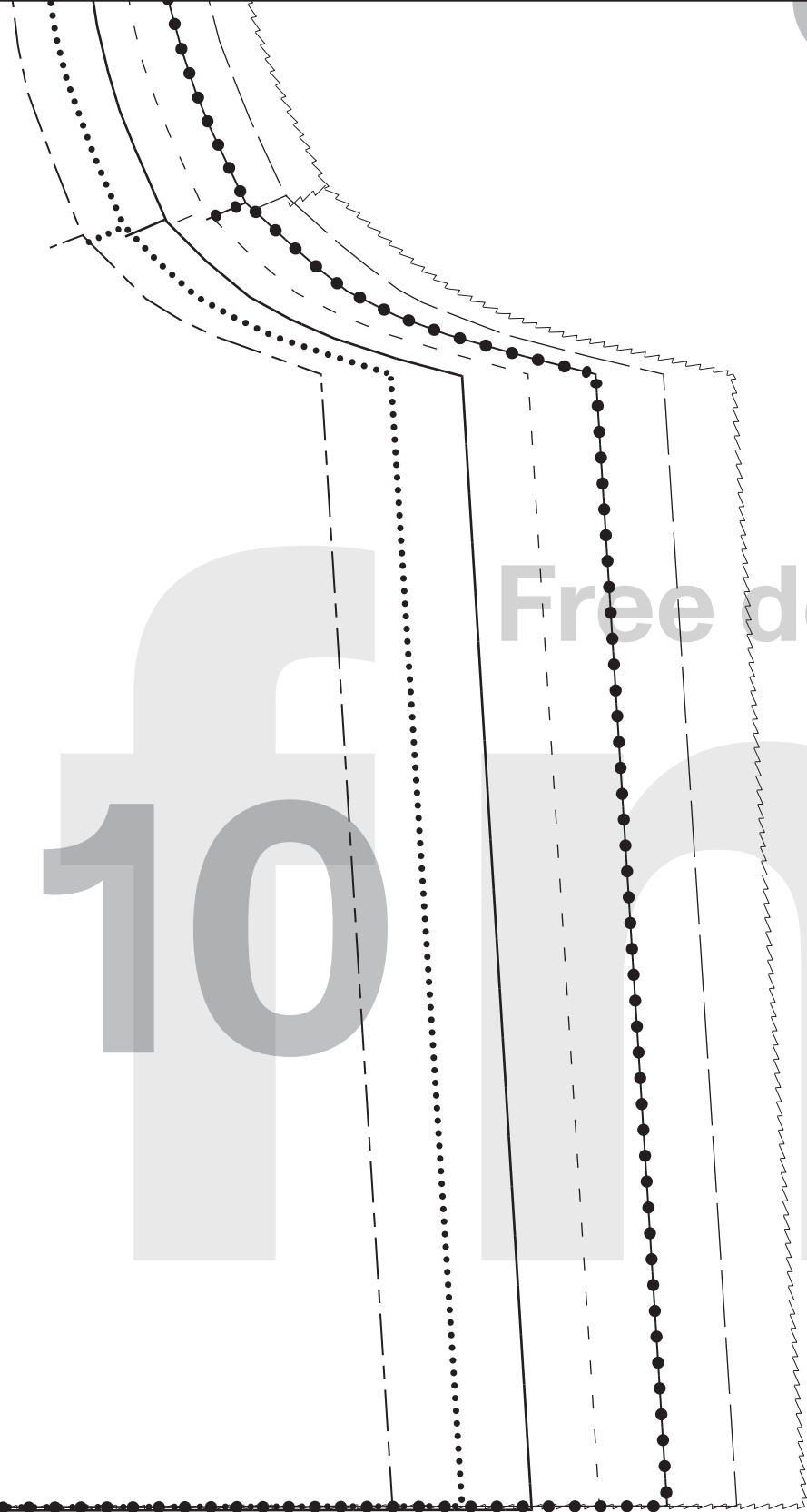
DIY 2400

PART 1
FRONT



x 2

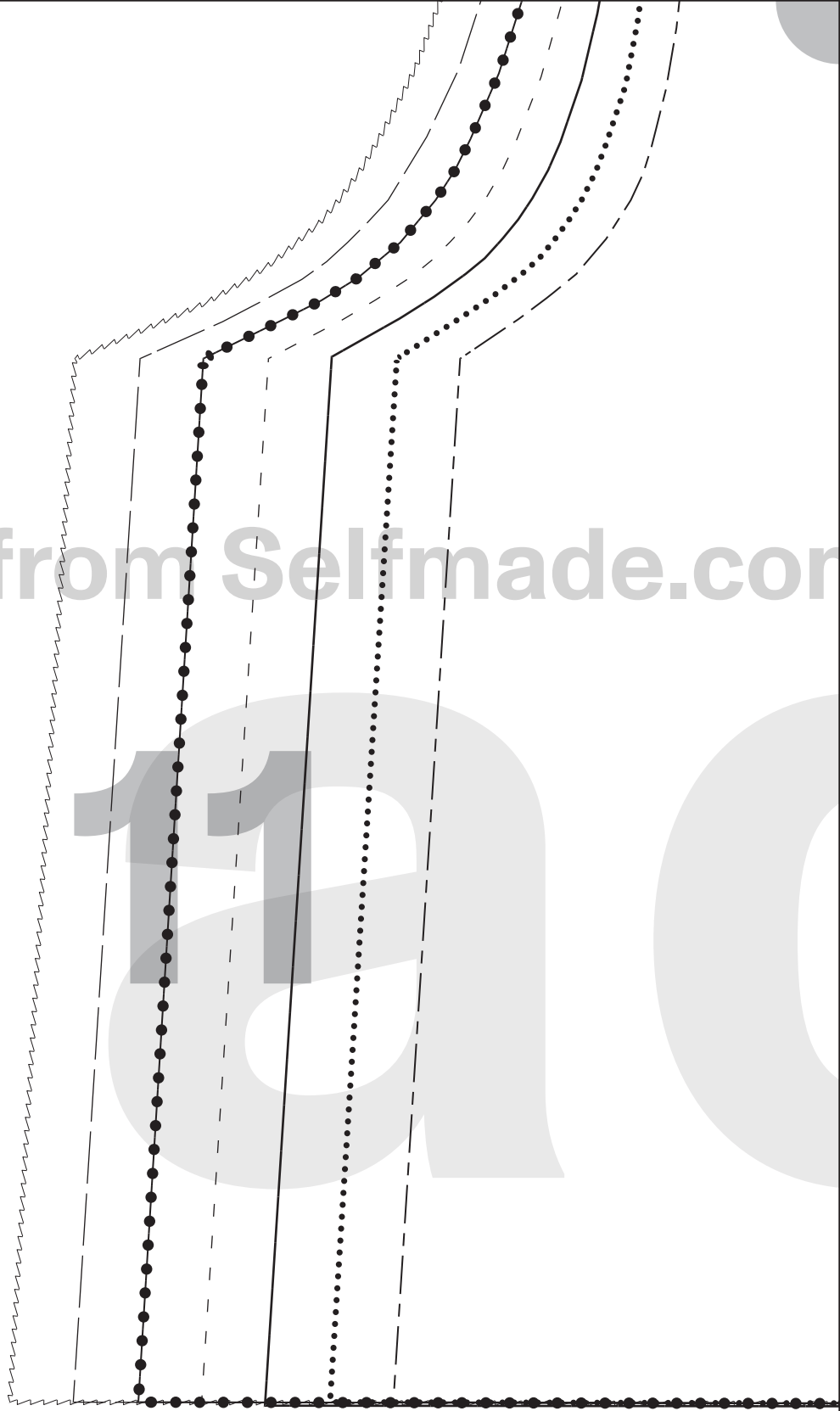
INCL. SEAM ALLOWANCE



10

Free do

Download from Selfmade.com



DIY2400
PART 2
BACK



x1

INCL. SEAM ALLOWANCE

FOLD LINE

